

# From Off-The-Shelf to Market-Ready© New Age Enclosures is your Single Source Solution.



**Get a free quote today.**

Visit [newageenclosures.com/services](http://newageenclosures.com/services) or  
call 855-4NA-ENCL for customization.

Part Marking  
CNC Cutouts  
Color Options  
RF/EMI Shielding  
Specialized Materials  
Custom Designed Enclosures

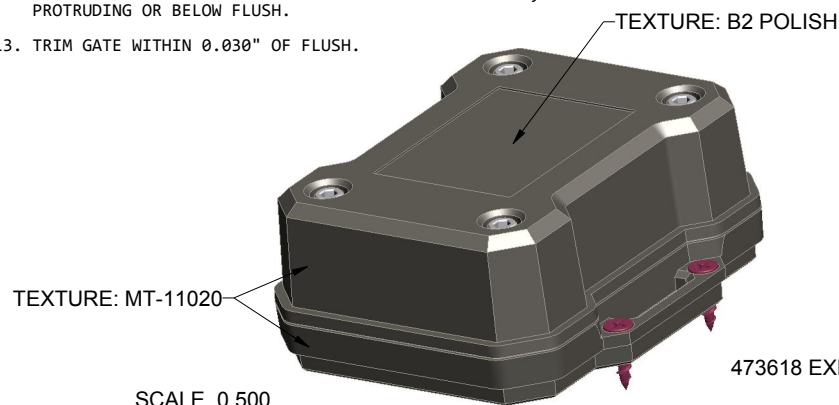
**NEW AGE  
ENCLOSURES**  
DEVELOP THE FUTURE

**20+** YEARS  
of LEADING BY DESIGN

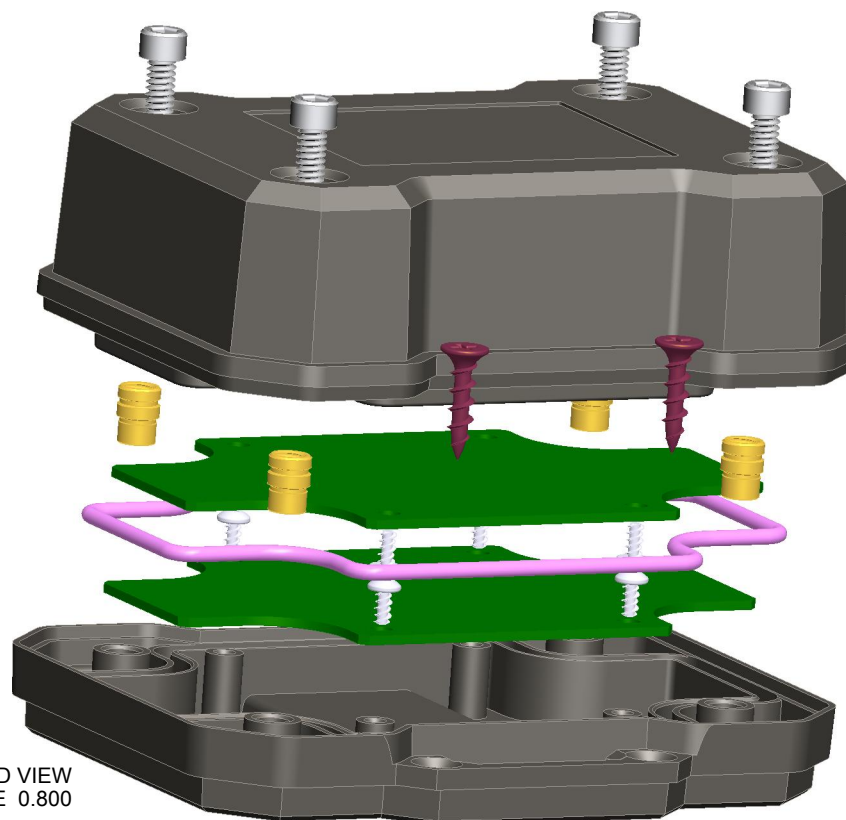


NOTES: UNLESS OTHERWISE SPECIFIED

1. CORNERS DRAWN SHARP TO BE R.005 MAXIMUM.
2. EXTERIOR SURFACE TEXTURE TO BE LIGHT EDM FINISH, EQUIVALENT TO MT-11020, EXCEPT WEHRE NOTED. TEXTURE ON ENCLOSURE WILL VARY FROM TIME TO TIME AS THE TOOL WEARS AND IT BECOMES NESSESARY TO REAPPLY.
3. COVER INTERIOR SURFACE TEXTURE TO BE: B2 POLISH. BASE INTERIOR SURFACE TEXTURE TO BE: DRAW POLISH.
4. ALL INSIDE RADII .010R. UNLESS OTHERWISE SPECIFIED.
5. ALL EXTERNAL DIMENSIONS AFFECTED BY THE DRAFT APPLY AT THE LARGE END OF THE FEATURE, AND ALL INTERNAL FEATURES AFFECTED BY THE DRAFT APPLY AT THE SMALL END OF THE FEATURE UNLESS OTHERWISE SPECIFIED.
6. ONE DEGREE DRAFT IN THE DIRECTION OF PULL IS PERMISSIBLE UNLESS OTHERWISE SPECIFIED.
7. MATERIAL / COLOR: ENCLOSURE IN ASA PLASTIC IS STANDARD IN BLACK OR GRAY. SLIGHT COSMETIC SWIRLING, BLUSHING, AND/OR DISCOLORATION CAN OCCUR IN THIS ENCLOSURE DUE TO UV INHIBITORS IN THE RESIN. CUSTOM MATERIALS AND COLORS ARE AVAILABLE UPON REQUEST FOR QUOTE.
8. PCB SIZES ARE RECOMMENDATIONS ONLY. FINAL SIZES AND VERIFICATION OF ITS FIT ARE THE SOLE RESPONSIBILITY OF EACH CUSTOMER.
9. ASSEMBLY SCREWS FOR THE ENCLOSURE INCLUDED. MOUNTING SCREWS FOR THE PCB ARE SOLD SEPARATELY.
10. THIS DRAWING IS BASED ON A SOLID MODEL, AND IS FURTHER DEFINED BY THE SOLID MODEL FILE.
11. ALLOWABLE FLASH: 0.010 MAX.
12. ALL EJECTOR PIN MARKS TO BE WITHIN 0.010" OF FLUSH, PROTRUDING OR BELOW FLUSH.
13. TRIM GATE WITHIN 0.030" OF FLUSH.



473618 EXPLODED VIEW  
SCALE 0.800



8	473618_ORING	OR-155 ORING - STANDARD	SILICONE - SHORE A	INCLUDED	1
7	SCREW_HILO-N04	#4 HILO SCREW x .375"	ZINC PLATED	CUSTOMER SUPPLIED	8
6	SCREW-DRYWALLX750	DRYWALL SCREW	REFERENCE ONLY	CUSTOMER SUPPLIED	4
5	473618_PCB	473618 PCB - REFERENCE	.062" THICK	CUSTOMER SUPPLIED	2
4	473618_COVER	473618 COVER - STANDARD	ASA	BLACK or GRAY	1
3	473618_BASE	473618 BASE - STANDARD	ASA	BLACK or GRAY	1
2	SHCS_10-24	S.H.C.S. 10-24 UNC X 1-1/2	STEEL	-	4
1	TRISTAR_10-24_INSERT	PEM INSERT 10-24	BRASS	-	4
ITEM	FILE NAME	DESCRIPTION	MATERIAL	COLOR	QTY.

BILL OF MATERIALS

R E V I S I O N

REV.	DRAWN BY	ECO No	DESCRIPTION	DATE	APPROVE
A	M BOYER	PDCL 1807	PRELIMINARY RELEASE	2020-Apr-08	D.C.
B-J	M BOYER	00423	UPDATE TO AS-BUILT PER DIR2105 - SEE REV J FOR HISTORY	2023-Mar-21	L.M.
1.0	M BOYER	00423	RELEASE TO MFG	2023-Mar-21	

THIRD ANGLE PROJECTION



DO NOT SCALE DRAWING

TOLERANCES: UNLESS OTHERWISE SPECIFIED  
DIMENSIONS ARE IN U.S. INCHES.  
X.XX = .015 X.XXXX = .001  
X.XXX = .010 X.X" = 1"

NEW AGE ENCLOSURES

Customer's Part No: 473618

APPROVAL	BY	DATE
CHECK		
ENG.		
SCALE	AS NOTED	

DRAWN BY  
M BOYER  
2020-Apr-06

**NEW AGE ENCLOSURES**

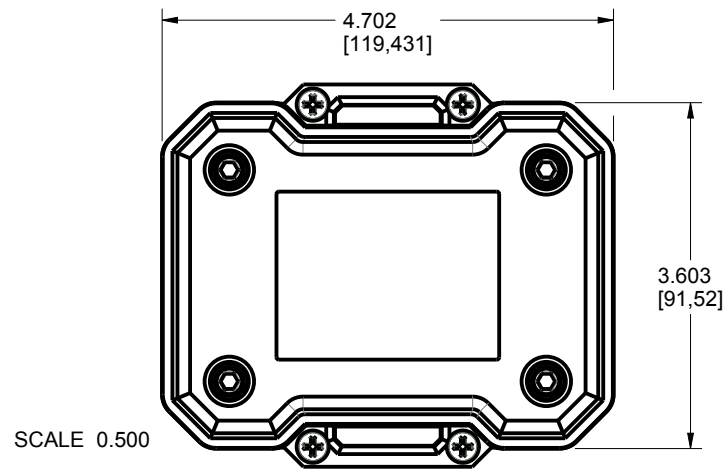
2240 South Thornburg Street Santa Maria, CA. 93455  
ph. (805) 595-1310 fax (805) 595-1024  
[www.newageenclosures.com](http://www.newageenclosures.com)

**RUGGED UTILITY - STANDARD  
SXX-473618-XXX**

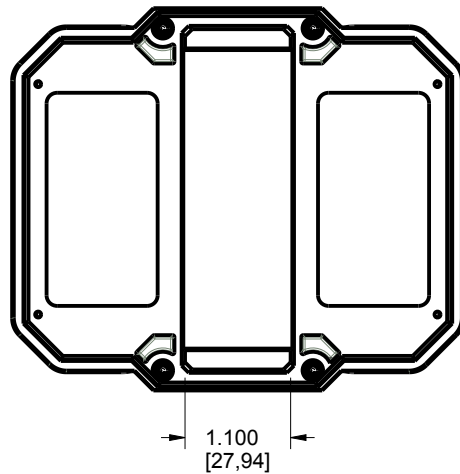
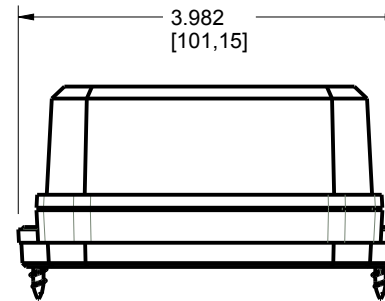
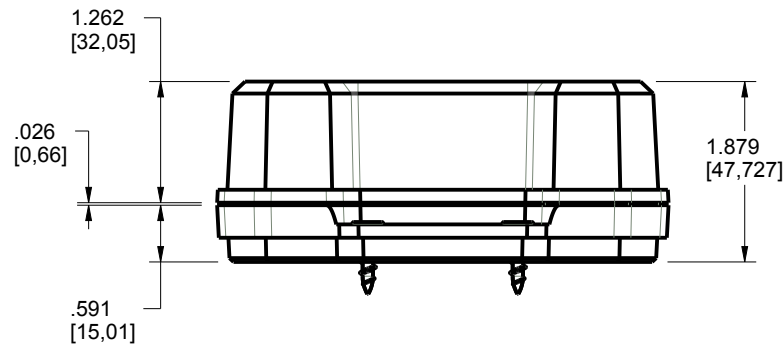
SIZE A	DRAWING NAME 473618_R1_0	SHEET 1 OF 6	REV.DOC 1.0
-----------	-----------------------------	-----------------	----------------



# 473618 ASSEMBLY



SCALE 0.500



TOLERANCES- UNLESS OTHERWISE SPECIFIED DIMENSIONS ARE IN U.S. INCHES. X.XX = .015 X.XXXX = .001 X.XXX = .010 X.X° = 1°		
NEW AGE ENCLOSURES		
Customer's Part No: 473618		
APPROVAL	BY	DATE
CHECK		
ENG.		
SCALE	AS NOTED	
DRAWN BY	2020-Apr-06	
M BOYER		

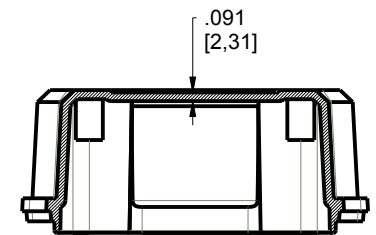
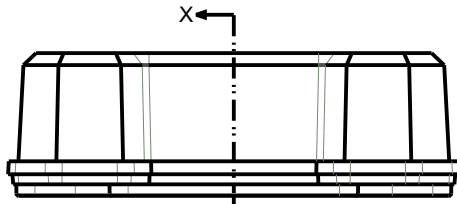
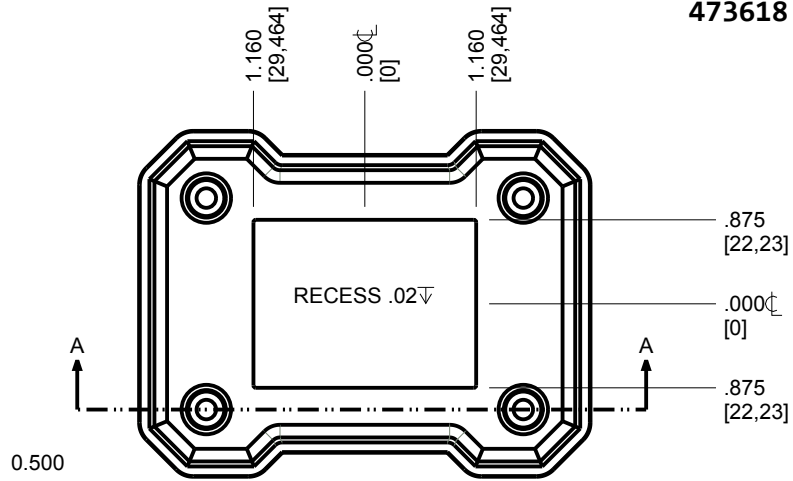
<b>NEW AGE ENCLOSURES</b>	
2240 South Thornburg Street ph. (805) 595-1310	Santa Maria, CA. 93455 fax (805) 595-1024
www.newageenclosures.com	

**RUGGED UTILITY - STANDARD**  
**SXX-473618-XXX**

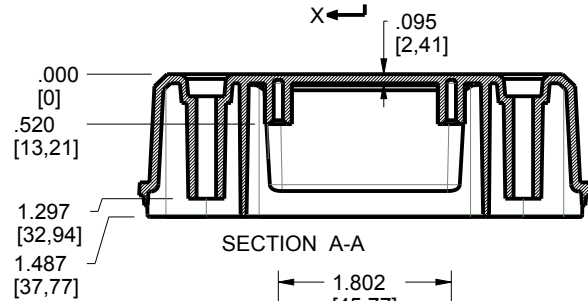
SIZE	DRAWING NAME	SHEET	REV.DOC
A	473618_R1_0	2 OF 6	1.0

# 473618 COVER

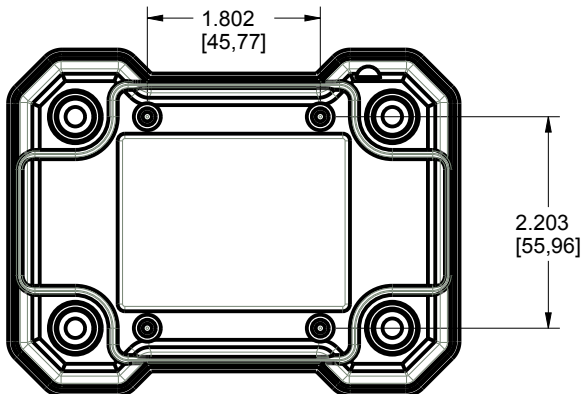
SCALE 0.500



SECTION X-X



SECTION A-A



TOLERANCES- UNLESS OTHERWISE SPECIFIED DIMENSIONS ARE IN U.S. INCHES.		
X.XX = .015 X.XXXX = .001		
X.XXX = .010 X.X° = 1°		
NEW AGE ENCLOSURES		
Customer's Part No: 473618		
APPROVAL	BY	DATE
CHECK		
ENG.		
SCALE	AS NOTED	
DRAWN BY	2020-Apr-06	
M BOYER		

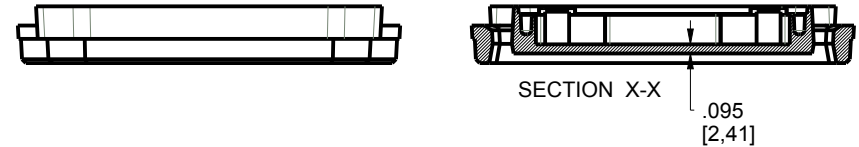
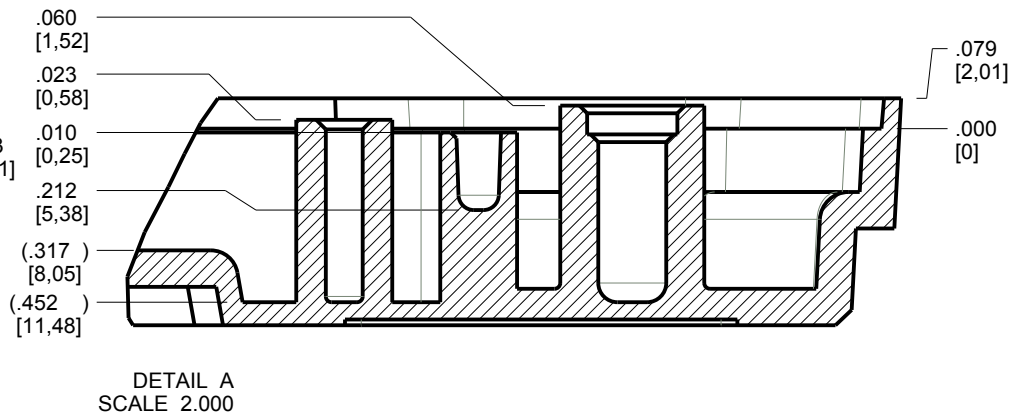
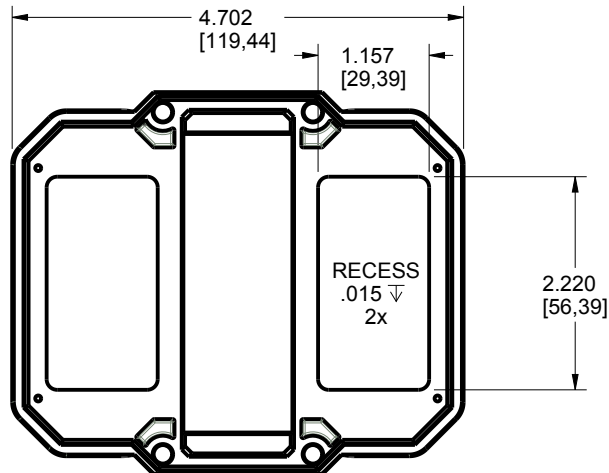
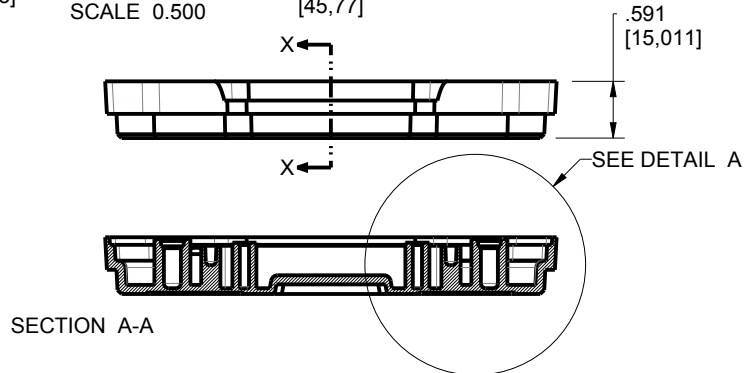
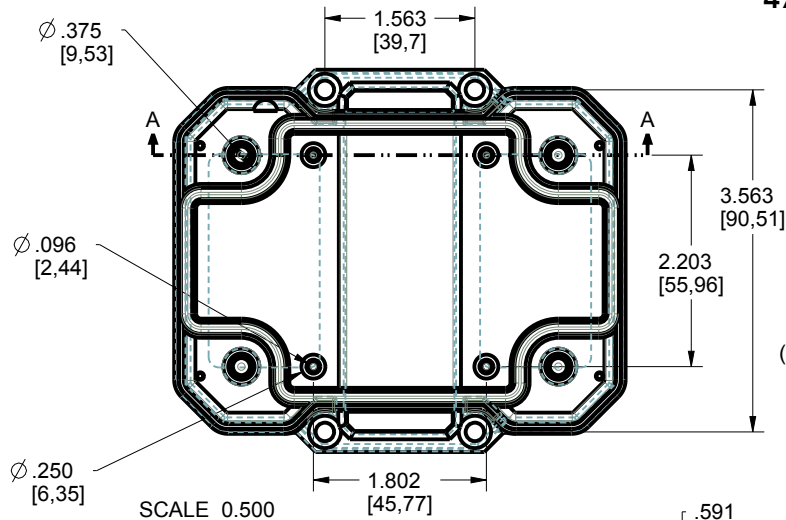
**NEW AGE ENCLOSURES**  
 2240 South Thornburg Street Santa Maria, CA. 93455  
 ph. (805) 595-1310 fax (805) 595-1024  
[www.newageenclosures.com](http://www.newageenclosures.com)

**RUGGED UTILITY - STANDARD**  
**SXX-473618-XXX**

SIZE	DRAWING NAME	SHEET	REV.DOC
A	473618_R1_0	3 OF 6	1.0



# 473618 BASE

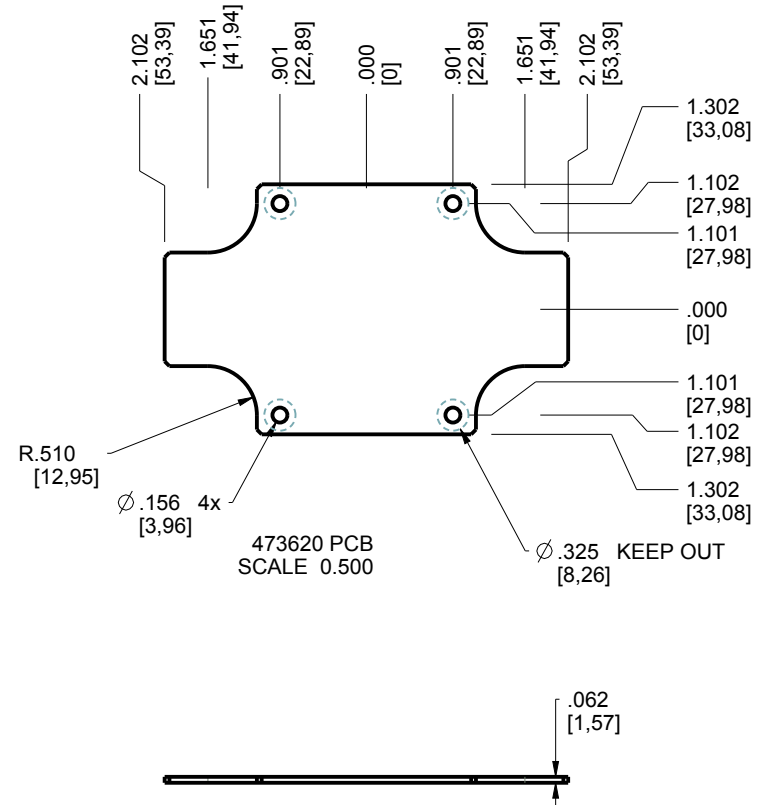
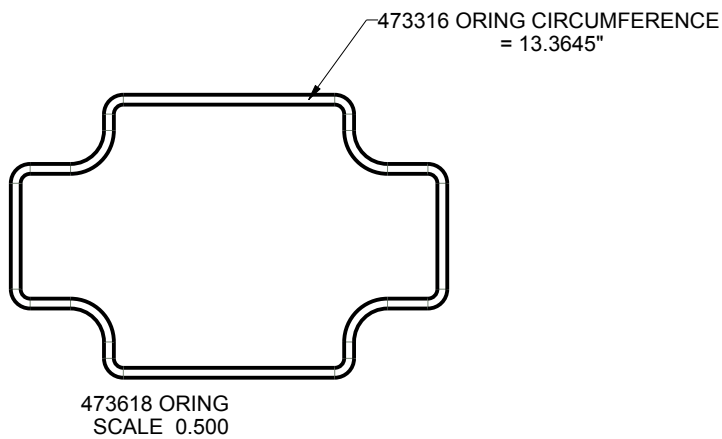
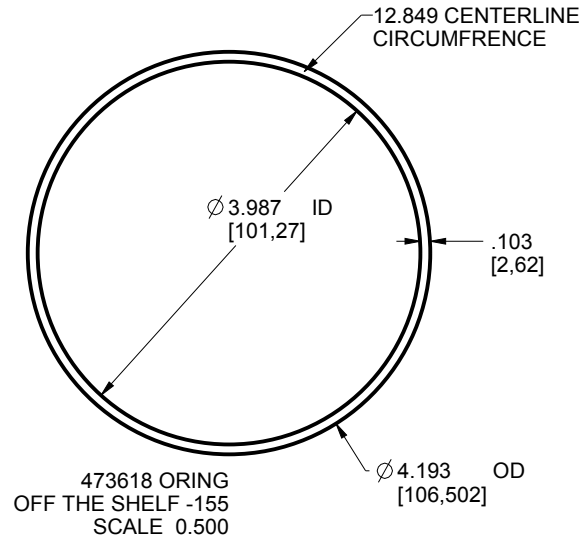


TOLERANCES: UNLESS OTHERWISE SPECIFIED DIMENSIONS ARE IN U.S. INCHES.		
X.XX = .015 X.XXXX = .001		
X.XXX = .010 X.X° = 1°		
NEW AGE ENCLOSURES		
Customer's Part No: 473618		
APPROVAL	BY	DATE
CHECK		
ENG.		
SCALE	AS NOTED	
DRAWN BY	2020-Apr-06	
M BOYER		

<b>NEW AGE ENCLOSURES</b>		
2240 South Thornburg Street Santa Maria, CA. 93455		
ph. (805) 595-1310 fax (805) 595-1024		
www.newageenclosures.com		
<b>RUGGED UTILITY - STANDARD</b>		
<b>SXX-473618-XXX</b>		
SIZE	DRAWING NAME	SHEET
A	473618_R1_0	4 OF 6
		REV.DOC
		1.0

# 473618 PCB - CUSTOMER SUPPLIED

PCB SIZES ARE RECOMMENDATIONS ONLY. FINAL  
SIZES AND VERIFICATION OF ITS FIT ARE THE  
SOLE RESPONSIBILITY OF THE OEM.



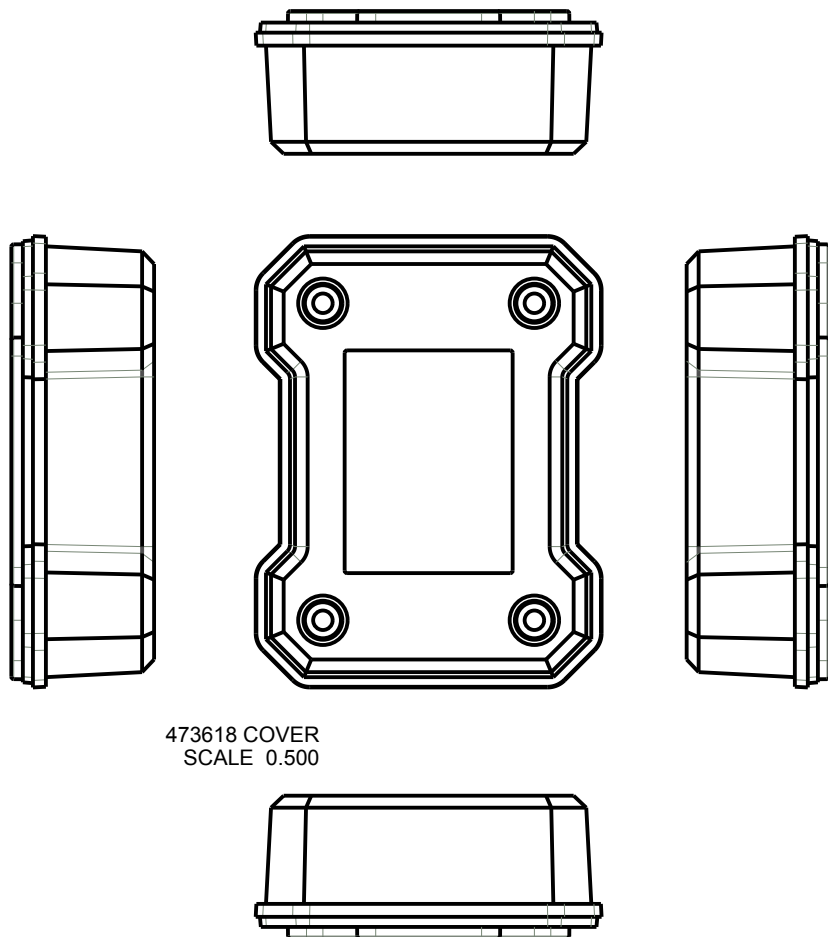
TOLERANCES- UNLESS OTHERWISE SPECIFIED DIMENSIONS ARE IN U.S. INCHES.		
X.XX = .015 X.XXXX = .001		
X.XXX = .010 X.X° = 1°		
NEW AGE ENCLOSURES		
Customer's Part No: 473618		
APPROVAL	BY	DATE
CHECK		
ENG.		
SCALE	AS NOTED	
DRAWN BY	2020-Apr-06	
M BOYER		

<b>NEW AGE ENCLOSURES</b>		
2240 South Thornburg Street Santa Maria, CA. 93455		
ph. (805) 595-1310 fax (805) 595-1024		
www.newageenclosures.com		
<b>RUGGED UTILITY - STANDARD</b>		
<b>SXX-473618-XXX</b>		
SIZE	DRAWING NAME	SHEET
A	473618_R1_0	5 OF 6
		REV.DOC
		1.0

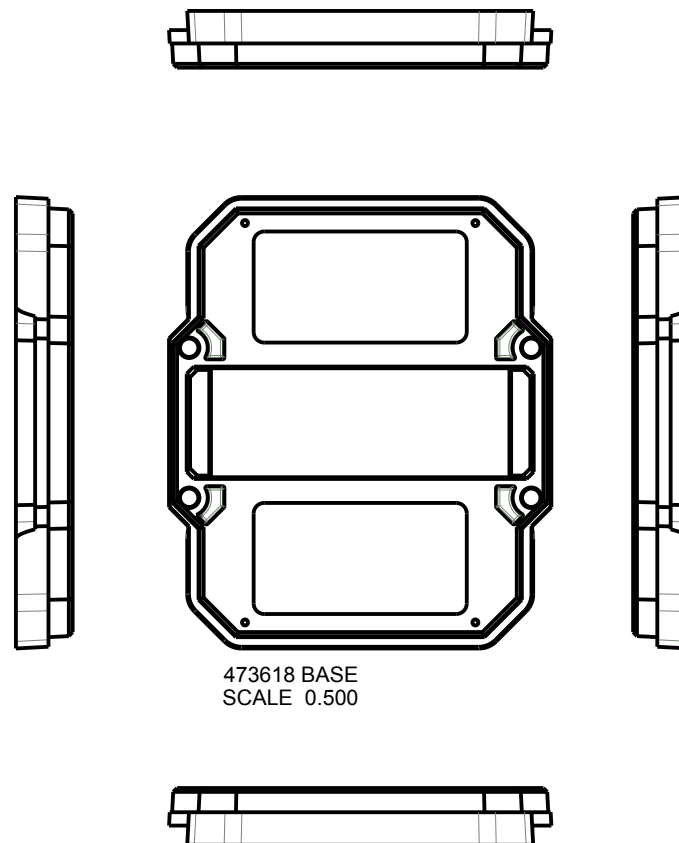


## 473618 - 2nd OPERATION DETAILS

NEW AGE ENCLOSURES DELIVERS YOUR ENCLOSURE MARKET-READY WITH IN-HOUSE  
CNC MACHINING, PAD PRINTING, ASSEMBLY, AND FULFILLMENT.  
ALL SURFACES AND AREAS ARE AVAILABLE FOR CNC ALTERATION BY NEW AGE ENCLOSURES  
CALL (805) 595-1310 FOR PRICING AND SCHEDULE.  
THE INSIDE RADIUS OF ANY MACHINED FEATURES SHOULD BE NO SMALLER THAN .031"



473618 COVER  
SCALE 0.500



473618 BASE  
SCALE 0.500

### SXX-473618-XXX COVER - ASA, BLACK

STEP	DESCRIPTION	CUTTER	FIXTURE	ORIENTATION	PROGRAM
1-C-C1	-	T2 = .062" EM	-	-	o1001
2-C-C2	-	T2 = .062" EM	-	-	o1002

TOLERANCES: UNLESS OTHERWISE SPECIFIED  
DIMENSIONS ARE IN U.S. INCHES.  
X.XX = .015 X.XXXX = .001  
X.XXX = .010 X.X° = 1°

NEW AGE ENCLOSURES

Customer's Part No: 473618

APPROVAL	BY	DATE
CHECK		
ENG.		
SCALE	AS NOTED	
DRAWN BY	M BOYER	
	2020-Apr-06	

**NEW AGE ENCLOSURES**

2240 South Thornburg Street Santa Maria, CA. 93455  
ph. (805) 595-1310 fax (805) 595-1024  
www.newageenclosures.com

**RUGGED UTILITY - STANDARD**  
**SXX-473618-XXX**

SIZE	DRAWING NAME	SHEET	REV.DOC
A	473618_R1_0	6 OF 6	1.0